



June 2025

## WARREN COUNTY HISTORICAL SOCIETY

Box 256 Indianola, IA 50125

Phone-515-961-8085

(Highway 92 West, 1300 West 2nd, turn north into fair grounds, then turn east)

E-mail- [contact@warrencountyhistory.org](mailto:contact@warrencountyhistory.org)

### Inside this Issue:

Page 4 Strategic Initiative & Timeline

Page 5 Toy Memories

Page 7 Carlisle Cache from Early Clovis Era

Page 8 Mary Tuft's Summerset History

### MEETINGS

**WCHS Board 2<sup>nd</sup> Thursday of month**  
9:30am

**LCF Meeting 2<sup>nd</sup> Thursday at 11:00am**

**Soup Supper & Annual Meeting**

**Tuesday, June 24**

**Membership Meeting 7:00pm**

**CHEAP LANDS & BROKEN TREATIES**

**By Kent Halstead**

**Friday, June 20 3:00 to 7:00**

**Saturday, June 21 9:00 to 2:00**

**WCHS ANNUAL GARAGE SALE**

**WCHS will be open July 23-27**

**During the Warren County Fair**

Please continue to collect Indianola HyVee receipts and bring them in to the museum. We have a large glass container near the kitchen where you can place them. We can use gas, pharmacy, grocery or any other HyVee receipt. It is an easy way to raise funds for WCHS. When HyVee asks if you want to have your receipt, say **YES!**



Here is a tax-smart way for traditional IRA owners, age 70 1/2 or older to give to WCHS. Make a qualified charitable distribution (QCD) and pay no tax on the gift. For 2025 you can transfer your QCD gift directly to WCHS.

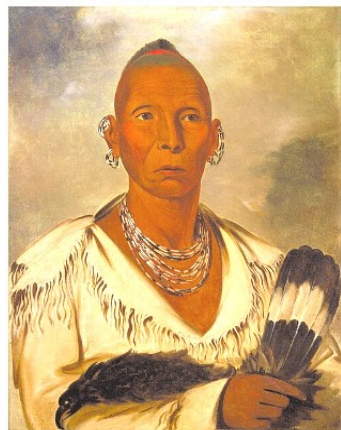
### WCHS RECEIVES TECHNOLOGY GRANT

The Warren County Historical Society has received a \$5,000 grant from the Warren County Philanthropic Partnership that will help us achieve our Digital Transformation Phase 2: Technology Upgrade. Phase 2 will include much needed technology and software upgrades. WCHS is trying to stop being Warren County's best kept secret by strengthening our visibility and community engagement.

Many thanks to the Warren County Philanthropic Partnership for awarding this grant. The Warren County Philanthropic Partnership was organized to promote and enhance community based philanthropy in Warren County.

### Black Hawk

Mahkatêwe-meshi-kêhkêhkwa



Portrait by George Catlin, 1832

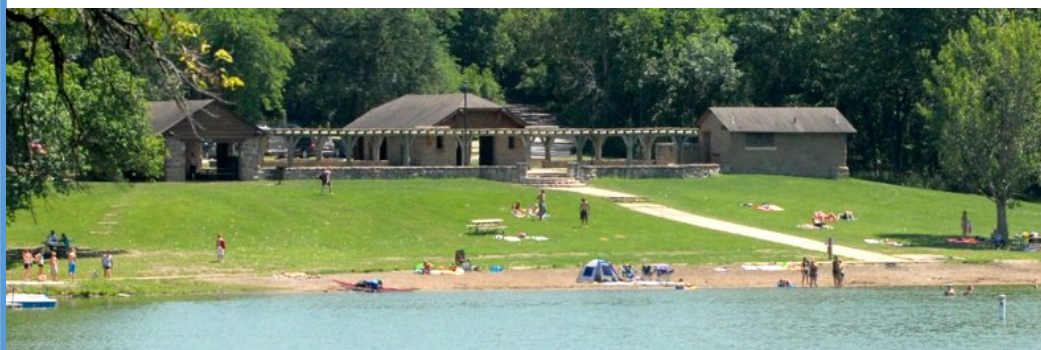
### CHEAP LANDS & BROKEN TREATIES

On Tuesday, June 24 at 7:00 pm Indianola historian Kent Halstead will share the stories of Taoyateduta (Chief Little Crow), who was shot in 1863 and buried in 1971; Warrior Mahkatewe-meshi-kehkehkwa, Blackhawk, imprisonment and life; and the story of the Half Breed Tract, 119,000 acres located in Lee County, Iowa Territory 1924.

The Native American Graves Protection and Repatriation Act of 1990 will be explained with the role of Native American remains that were taken from Effigy Mounds National Monument and hidden in a garage and The Mayo Clinic's role in taking Native American remains in December of 1863.

### Lake Ahquabi State Park to Receive Permanent Signage

An Indianola Chapter of Questors, General Joseph Warren, has received a grant to provide permanent signage for the bath house, the lodge, and the entrance area of Lake Ahquabi. They were placed on the National Register of Historic Places in 1991. The lake was created in the 1930s and built by the CCC (Civilian Conservation Corp). The CCC evolved during the depression to provide work for unemployed men. CCC Camp Allerton was built at what today is the Warren County Fair Grounds and men stationed there built Ahquabi's structures from local limestone. Saturday, June 7th at 11:00am at the lake a brief program will celebrate the 1st sign, CCC, and Camp Allerton.



## Thoughts from the President

***Hello Everyone!***

***Summer is in full swing! Warren County Historical Society has lots going on and new exhibits to see. Please remember to visit the WCHS Museum, Heritage Village and Research Library. Summer a good way to spend a couple hours with us exploring the county's past or maybe some family history.***



Deb Larrison

***Annual Yard Sale time! It is time for our annual yard sale on June 20th (3-7) and 21 st (9-2).***

***Are you cleaning out? Is it time to downsize or purge? Please bring your treasures to the WCHS by 19 th . Your treasures will help to support WCHS' daily operations. We do not***

***accept clothing; but clothing may be taken to Indianola's Helping Hand. We are planning to have a food truck for your convenience.***

***Warren County Fair is coming on July 23-27! Please make your way over to the museum. We will be open during the fair 10-4. It will be cool inside. We are also looking for some volunteers to help man the museum during the fair. If you'd like to help, please contact us.***

***We hope that you have a great summer and we look forward to seeing you!***

***Debbie Larrison***



it's time to  
**RENEW YOUR  
MEMBERSHIP**

Thank you for your support in the past.

Please consider joining, renewing or gifting a relative or friend with a WCHS membership for 2025.

Please fill out this form and return it to us.

Your membership dues or donations help us keep our doors open and continue to provide programming and preservation of War ren County's history.



WARREN  
COUNTY  
HISTORICAL  
SOCIETY

Join Or Renew Your  
Warren County Historical Society Membership

Box 256, Indianola, IA 50125 Phone 1-515-961-8085

(Highway 92 West, 1300 West 2<sup>nd</sup>, turn north into Fair  
Grounds, then turn east)

Email: [contact@warrencountyhistory.org](mailto:contact@warrencountyhistory.org)

### Fill out your information

First Name \_\_\_\_\_

Last Name \_\_\_\_\_

Address \_\_\_\_\_

Cell Phone \_\_\_\_\_ Landline \_\_\_\_\_

Email \_\_\_\_\_

### Giving Choices

New Member \_\_\_\_\_

Renewal \_\_\_\_\_

\$25 Single \_\_\_\_\_

\$30 Family \_\_\_\_\_

Donation \$50 \_\_\_\_\_

\$100 \_\_\_\_\_

Other \_\_\_\_\_

**WARREN COUNTY HISTORICAL SOCIETY**

# **SUMMER HUGE, Multi GARAGE SALE**

**Friday, June 20, 3:00—7:00 pm**

**Saturday, June 21, 9:00 am to 2:00 pm.**

Highway 92 West, Turn into Warren County Fair-grounds on north and then turn right to WCHS

**We are accepting donations June 1st at the WCHS Museum on Thursdays 9:00 to 4:00 or Saturdays 9:00 to noon through Thursday June 19th.**

**Want to help sort and price, work at sale or have questions? Contact Linda Beatty at 961-3088 or stop by WCHS on Thursdays, 9 to 4 or Saturday 9 to noon.**



Your WCHS Board has been working hard with Jenna Thompson on Phase 1 of the WCHS long range planning process. You will find our proposed Strategic Initiative and Timeline on page 4. Please take some time to read and examine the proposal.



# Strategic Initiatives & Key Actions Timeline

WCHS

INITIATIVES		2025 (Q3)	2025 (Q4)	2026 (Q1-2)	2026 (Q3-4)	2027	2028	2029	2030	2035
GOAL 1 Elevate WCHS as a Cultural Pillar	Visibility & Engagement	Build a strong and recognizable brand. Enhance and standardize outreach efforts to solidify WCHS as a leader in collecting, preserving, and creating interest in local history.								
	Build Brand Recognition	Brand/Marketing Strategy	Expand Marketing Channels							Evaluate Accreditation & Reciprocity Options
	Enhance Outreach	Website & Social Redesign	Enhance Social Integration							
	Develop Strategic Partnerships	Stakeholder Outreach Guidelines & Pilot	Expand Stakeholder Outreach							Consider Association & Peer-to-Peer Networks
GOAL 2 Cultivate Opportunities to Discover Local History	Experiences & Accessibility	Partnership Guidelines & Pilot Project	Project Planning, Resourcing, & Implementation							
		Identify 2-3 Partnership Opportunities								
	Spark Interest	Bring history to life in diverse settings, inviting people from Warren County and beyond - whether they're enthusiasts or simply curious - to explore the past in ways that are both meaningful and memorable.								
	Improve Access	Launch 1-3 Off-Site Activity Experiences	Enhance Off-site Experiences							
GOAL 3 Boost our Capabilities	County Connection	Digitize 1-3 Exhibits & 1-2 Self-Guided Tours	Develop & Launch Interactive & Immersive Experiences							
	Social Connection	Identify Core Stories & Themes	Develop and Integrate Interpretive Theme Across Platforms / Redesign Core Experiences							
		Community Poll Series	Test Informal Gatherings							
		Continue Hosting Mission-Aligned Programs Led by Partners	Structured Programming Led by WCHS							
GOAL 3 Boost our Capabilities	Organizational Sustainability	Strengthen leadership continuity, member and volunteer engagement, financial strategies, and infrastructure to facilitate resilience and lasting success.								
	Develop Leaders	Update Roles & Recruitment Methods	Skills Based Recruitment	Consider MAP Program						Evaluate Need & Options for Professional Staff
	Engage Members & Volunteers	Annual Planning & Succession, On-boarding, & Development Strategies								
	Optimize Financial Strategies	Update Roles & Recruitment Methods	Enhance Recruitment, Engagement, & Retention							Re-evaluate Needs & Options
GOAL 3 Boost our Capabilities	Develop Digital & Physical Infrastructure	Establish Needs, Package Projects, & Identify Resources	Launch Capital Campaign							
		Membership & Sponsorship Pilot	Align Membership, Sponsorship, & Contributions w/ Capital Campaign							
		Test Income Opportunities	Enhance Income Opportunities	Re-evaluate Federal Grants						
		Programming Prep	Schematic Phasing Plans	Minor Projects Design Documents						Design Documents
GOAL 3 Boost our Capabilities		Technology Upgrades	Minor Site & Building Improvements, Tech Upgrades							Major Improvements

Note: Timelines will shift as each key action is further developed, resourced, and launched. Some may accelerate while others are extended.

Draft: 6/4/2025



**2025 WARREN COUNTY  
55th Log Cabin Festival  
CHILDREN'S GAMES, TOYS &  
MEMORIES**

**Saturday, September 27th**



## Share Children's Games, Toys & Memories

Please send us a copy of your favorite children's games and toys memories. We would like to share your story with our membership.

Write your story, add a photo if available and send to [contact@warrencountyhistory.org](mailto:contact@warrencountyhistory.org)

We will see that it gets printed in our newsletter.



## MY SASSY WALKER DOLL

**A Great Childhood Memory—Susan Graeser**

One day mom and I went into Grahams Department Store on the Indianola Square. I'd never been there so was excited. I watched a cable carry a little box with cash up to the balcony from the cash register.

That's when I saw the beautiful DOLL—called "Sassy Walker". I spent the rest of my store visit looking that doll all over! We soon went home and I didn't think about the doll in Grahams.

Imagine my surprise when I opened a big box on Christmas and there was my "Sassy Walker! Next I opened a smaller package and found a small suitcase filled with a complete wardrobe for my new doll.

She had arrived with a pattern package. My great grandmother, grandmother, and mom had made all the outfits including a copy of my Blue Bird Girl's uniform. Great grandmother had also made a doll quilt by hand, using little two inch squares. My daughters and granddaughters have enjoyed my doll too.

## My Favorite Toy & Early Mode of Transportation

**By Jerry Beatty**

My favorite toy was a red 1940s Inland Tractall C pedal tractor. I used it nearly everyday from age 6 to 9. The tractor was built by Inland Mfg. Co. Buffalo, New York. It had a chain drive and adjustable seat. I rode it around my hometown of Shellsburg, IA and to our farm on the edge of town, two blocks away from our house. I had a cart that was attached to the pedal tractor and used the cart to carry milk in a lidded 2-gallon can back from the farm where I milked my cow each day.

Later my younger brother, Larry, used the pedal tractor and a larger cart to pick up trash around town. The tractor has been restored and remains in use by my siblings' grandchildren, great grandchildren and guests, who visit the Beatty family home (built by George Washington Carver's Simpson art teacher Etta Budd's brother in the 1920s) and now owned by my brother Larry.

I could zoom around Shellsburg because this early pedal tractor was light weight and streamlined. Later pedal tractors added so much weight trying to make them look more like a real tractor that they were hard to pedal.







### A Giant Thank You to All INDIANOLA 5th Grade Pioneer School Volunteers

The weather was perfect for Pioneer School. Volunteers and students were busy from 8:30 am to 1:30, and a good time was had by all.



Milo 1st grades visited one morning in late May to learn more about George Washington Carver. Isabell Olsasky, rural Milo and 2025 Borlaug-Ruan International Internship recipient had spoken to them about the world food crisis and Borlaug, Henry Wallace and George Washington Carver's scientific work related to a sustainable food supply. This made them want to know more about Carver.





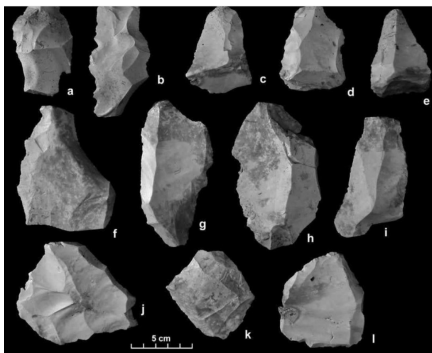


**Mike Vanderpool seeding the north end of our new J Street property**

Years ago when the residential properties were developed on J Street, they removed the topsoil from the north end of our new property to use on the residential properties. This caused a change in the drainage pattern.

Mike Vanderpool arranged to remove the fill left from Fareway's new parking lot. He hauled in over 70 loads of fill from the Fareway parking project to our lot, landscaped and seeded the new fill.

Once again a huge thank you to Mike for his quick thinking and hard work.



**Carlisle cache flakes photograph Matthew G. Hill**

### Early Carlisle Cache from Clovis Era Discovered

The Carlisle cache was discovered in 1968 by archaeologists from Iowa State University, who were responding to the partial destruction of an Oneota village by the U.S. Army Corps of Engineers who were working on a levee construction project designed to protect southeastern Carlisle from the high water that Lake Redrock might cause. Sediment was being borrowed from the prehistoric Oneota village area to build the levee.

The archaeologists established that the 45 pristine artifacts were not Oneota but from an earlier Clovis culture. The way they discovered the Burlington chert artifacts were not Oneota but Clovis is by the way they were knapped (shaped into stone tools by fracturing).

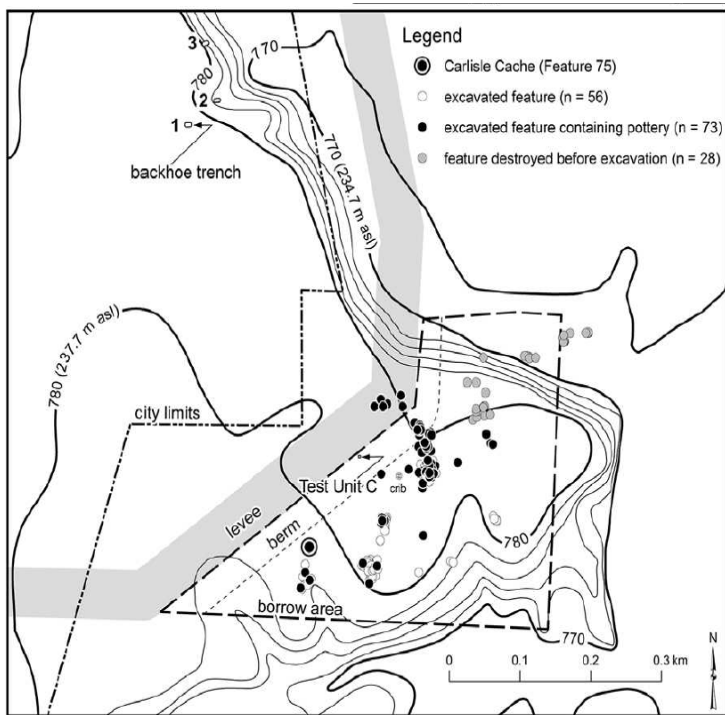
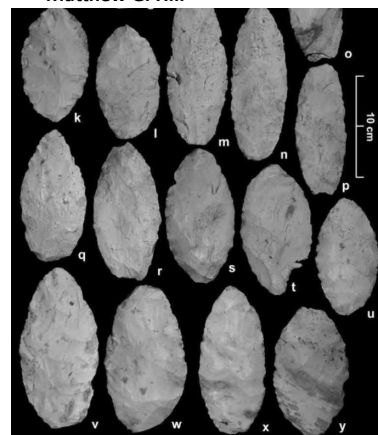
The Carlisle cache is the oldest evidence of humans in Iowa.

**Definitions:** Oneota culture-last prehistoric culture of U.S Midwest (1150-1700 CE) and also name archaeologists have given to the last prehistoric culture of the American upper Midwest. They lived in villages and camps along tributary streams and rivers of the upper reaches of the Mississippi River

**Clovis Culture:** archaeological culture from the Paleoindian period of North America spanning around 13,050 to 12,759 years BCE. They appeared after the last glacial period.

**Burlington Chert:** Chert is a biochemical sedimentary rock made from microcrystalline quarts. It is hard, registering a 7 on the Mohs hardness scale and displays conchoidal fracturing. Burlington Formation is primarily found in both nodules and bluffs from the American Bottoms into the grater St. Louis

**Carlisle cache bifaces (stone tools with flakes removed) Photo Matthew G. Hill**



area and the confluence of the Arkansas and Mississippi River (mainly Illinois, Missouri & Iowa). Color-white to gray or tan, possible banding or mottling with medium to fine grain and waxy luster

**Resources:** Chapter 6, *The Carlisle Clovis Cache from Central Iowa* by Matthew G. Hill, Thomas J. Loebel and David W. May, In *Clovis Caches, Recent Discoveries & New Research*, Edited by Bruce B. Huckell and J. David Kilby

**Mary Tufts of Summerset wrote this history of Summerset, Warren County, Iowa and it was printed in an unknown newspaper in 1930.**

The first land sale was in 1848. John Parmelee built the first mill in Summerset; first a saw mill in 1848 and in 1849 he added the grist mill. He sold the first goods and kept the post office.

The mill at Summerset was run by water power. The first millers were Beach and Parmelee and others in order were Spray, Rogers, Patton, Edwards, Wright & Davis, Sprague, Blanche, Smiths, Welch, Howard, Brown, Marshall, Utterson, Freeborn.

Doctors who have served in this community are Shank, Chance, Chapman, Hooper, Kern, Flynn, Judkins, Maulsby. .

Merchants in business here were Parmelee, Lees and Mont, Barns & Spray, John McClintic, Cris Turnipseed, Will Hamilton, Ash & Brown, Nealey & Dowell, Peck and Shivelor, Stephenson, Jane Epps, Tom Hastie, Baxendale, Dan Turnipseed, Lamb and Anderson, Martandale, Joe Anderson, Hemphill & Neads, Rastus, Marshall, Barthalomew & Lincerfelter, Utterson, Sheets, Beltz, Slocum, Woods, Pitcock, Swisher, Gooding, John Marshall, Schooler & Schooler, and Ray E. Schooler.

Summerset was laid out for a town by Mickel Gilman in 1872 after the coming of the Rock Island Railroad.

The first mill was replaced in 1865 on the same cite as the Parmelee mill by Mickel Gilman. Wright & Davis ran the mill, making a good quality of flour and had a good local trade.

Summerset was a thriving village with a good school and two churches, Baptist and Methodist, with real lively Sunday schools. In the early days there was plenty of wild game such as deer and turkey.

Children were just as happy with their stockings hung up at Christmas time finding them filled with striped stick candy, pop corn balls and orange or apple or a corn cob dressed up for a doll for the little girls; and what boy but loved his copper-toed boots, home-made sled and mittens that mother had knit.

In those days the farmers would kill from six to ten hogs for their year's meat. Make a barrel of sauerkraut, half barrel of scalded wild plums, a few bushels of wild crab apples buried in the ground with potatoes, cabbage, turnips, and onions. Very few people had cellars or caves. They would watch for a warm day to set out enough vegetables to last a few days and that would be a great day for the children. Then, each child would get a turnip to scrape. There were so few apples that if they did get one and there were several children it would be divided so each one could have a taste.

In early days men came quite a distance from other counties as far away as Missouri to the mill and to get their black-smithing done. They would have to wait three or four days sometimes for their turn at the Summerset mill. They would bring their blacksmith work and get it done while they waited. John E. Welch, Sr., was the blacksmith at that time. He had a shop east of Summerset on his farm. The first year he had four posts set in the ground with brush set up around and over the top for shelter. He worked there all winter in snow knee deep. He made the horse shoes and nails while the men waited.

The first child born was John Laverty in March 1848.

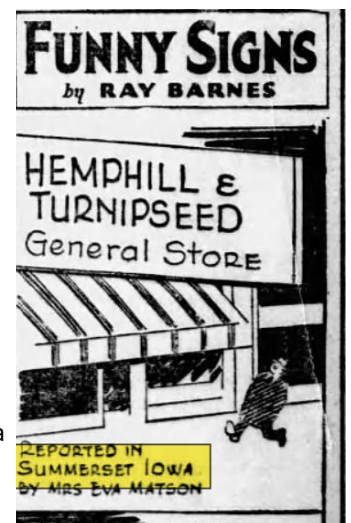
The first funeral was that of a man by the name of Hall.

For fifty-one years the church on the Summerset hill has sent out the call for men and women to live the better life. Our first minister and the one who organized the church was the Rev. Thomas Miller. Following him were Stitt, Cain, Trelow, Gains, Bonell, Tull, Butler, Terry, Ross, Bails, Emmons, Isley, Tedson, Foster, Dean, Moore, Morrison, Daily, Stoten, Hanson, Sondeson, Lapham, Bartlet, Brame, Thompson, Robertson and Stackhouse.

A.H. Dye has been the carpenter at Summerset for many years.

Train ticket agents have been Will Hamilton, Tom Brown, and Will Neads.

Abel Edwards, Summerset, received a patent June 6, 1876 for a turbine water wheel. It consists of a series of buckets and chutes which cause a parallel flow and increase the maximum of power and diminish the minimum of water required for operation.



Pasadena Star, December 1, 1937  
Pasadena, California